



TOTAL DİZ & KALÇA PROTEZİ
TOTAL KNEE & HIP
ARTHROPLASTY

CE2292

www.aysam.com.tr



Our vision is to become one of the leading medical device manufacturers in the world by adopting the understanding of “continuous improvement” and “quality is in detail” with sustainable growth in the production of orthopaedic implants, **arthoplasty product**, orthopaedic surgical instrument sets, surgical instruments, sterilization containers, perforated sheet baskets, orthopaedics instrument containers and other medical devices.

Aysam Orthopaedics and Medical Devices Company has documented this vision with **ISO 9001**, **ISO 13485**, and **CE** certificates.

Aysam serves over **80 countries** around the world. We also serve as an OEM supplier to many international companies.

Our main objective to achieve these goals is to bring innovation and quality together with trust.

Aysam manufactures orthopedic trauma products, arthroplasty product, orthopedic surgical instrument sets, other surgical instruments, sterilization containers and accessories, with its high technology machinery park in an area of 5,000 square meters.

Aysam continues to add new products to its 17,344 product range with R&D studies. It combines its 20 years of knowledge with Modern Technology and produces its products in a more innovative and qualified way.

In order to respond to the demands of the customers faster and with higher quality, Aysam trains and informs its staff at an advanced level and aims to ensure the continuity of customer, patient, and physician satisfaction under all conditions. Aysam increases both individual and corporate quality with continuous and up-to-date training & information.



The results of scientific studies performed with Aysam medical devices are published in prestigious journals. Aysam continues its development following the requirements of the age with its service understanding that does not compromise on patient health, customer satisfaction, and quality, and its open structure to innovations.

With its customer feedbacks, R&D studies, specialist physicians and experienced engineers and Modern infrastructure compatible with the requirements of the age, Aysam has adopted high quality, Improved and Innovative production as its principle.

Aysam has adopted the Total Quality Management System beginning from raw materials to post market services. With this understanding has certified its quality with certificates such as CE, ISO 9001, ISO 13485.

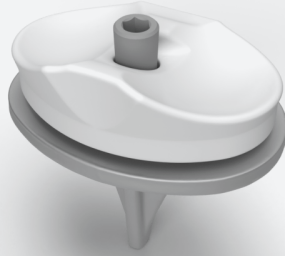
Aysam aims to ensure the continuity of customer, patient and physician satisfaction in all conditions by educating and informing its staff at an advanced level in order to respond to requests from its customers faster and with higher quality. Aysam increases its individual and Institutional quality by updating it with continuous trainings and seminars.

With export to five continents for 20 years, Aysam is increasing the number of distributors day by day and advancing its goals with firm steps. Aysam continues its activities in full harmony and loyalty with its dealers and distributor companies & participates in the National, International Fairs and Congresses and introduces its products that it offers to the service of the Medical World.

Aysam is rapidly approaching its goals with its understanding of service that does not compromise on patient, physician and health personnel, customer satisfaction and quality, and with its structure open to innovations.

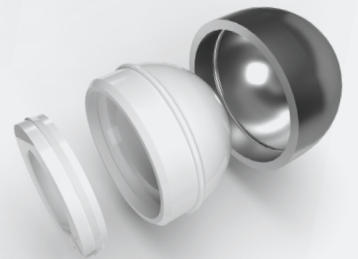
KNEE

TOTAL DİZ PROTEZİ
TOTAL KNEE
ARTHROPLASTY



HIP

ARTHROPLASTY



INDEX

KNEE ARTHROPLASTY

• IMPORTANT NOTE.....	6
• FIX-MOBILE CRUCIATE RETAINING FEMORAL COMPONENTS (CEMENTED).....	7
• FIX-MOBILE POSTERIOR STABILIZED FEMORAL COMPONENTS (CEMENTED).....	7
• FIX TIBIAL COMPONENTS (CEMENTED).....	8
• INSERT LOCKING SCREWS	8
• MOBILE TIBIAL COMPONENTS (CEMENTED).....	8
• FIX-MOBILE CRUCIATE RETAINING TIBIAL INSERTS.....	9
• FIX-MOBILE POSTERIOR STABILIZED TIBIAL INSERTS.....	9
• PATELLAR COMPONENTS (CEMENTED).....	9

HIP ARTHROPLASTY

• MODULAR FEMORAL BODY I (SANDBLASTED, UNCEMENTED).....	10
• MODULAR FEMORAL BODY II (HA COATED, UNCEMENTED).....	10
• MODULAR FEMORAL CALCAR BODY I (SANDBLASTED, UNCEMENTED).....	10
• MODULAR FEMORAL CALCAR BODY II (HA COATED, UNCEMENTED).....	10
• MODULAR FEMORAL STEM I (SANDBLASTED, UNCEMENTED).....	11
• MODULAR FEMORAL STEM II (HA COATED, UNCEMENTED).....	11
• FEMORAL BODY-STEM FASTENER BOLT.....	12
• KARE FEMORAL STEM I (POLISHED, CEMENTED).....	12
• KARE FEMORAL STEM III (HA COATED, UNCEMENTED).....	12
• ACETABULAR CUPS (HA COATED, UNCEMENTED).....	13
• ACETABULAR CUP INSERTS.....	13
• ACETABULAR CUP INSERTS 15 DEGREES.....	13
• FEMORAL HEADS.....	13
• ACETABULAR SCREWS	14
• BIPOLAR FEMORAL HEADS.....	14

IMPORTANT NOTE

The Aysam Knee Arthroplasty System has been designed to be a High Flex knee implant and as can be seen in the following illustrations is capable of achieving a theoretical flexion angle of 155 degrees without edge loading of the femoral component with the polyethylene insert under ideal conditions.

Maximum achievable flexion angle in the clinical setting is primarily a function of posterior bony impingement as well as numerous other patient-specific factors such as patella and soft tissue impingement, ligamentous considerations, and the position of the implant on the patient's bone. The illustrations depicted demonstrate that in the absence of other clinical or patient-specific restrictions such as those mentioned the Aysam Knee Arthroplasty System is designed to achieve and theoretically capable of reaching 155 degrees of flexion.

However, it is highly unlikely that flexion angles in this range are achievable by any knee implant system consistently.



Aysam Knee Arthroplasty System 155 degrees flexion

FIX-MOBILE CRUCIATE RETAINING FEMORAL COMPONENTS (CEMENTED)



CAT. NO	SIDE	SIZE
AK701FCCR0R01	Right	1
AK701FCCR0R02	Right	2
AK701FCCR0R03	Right	3
AK701FCCR0R04	Right	4
AK701FCCR0R05	Right	5
AK701FCCR0L01	Left	1
AK701FCCR0L02	Left	2
AK701FCCR0L03	Left	3
AK701FCCR0L04	Left	4
AK701FCCR0L05	Left	5

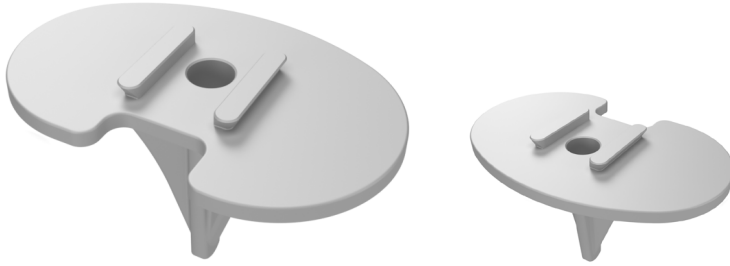
Material : Casted Co-Cr-Mo alloy (ISO 5832-4).
Intended Use : Primary knee replacement.
Use on/with : Fix Tibial Component Cemented, Insert Locking Screw, Fix-Mobile Cruciate Retaining Tibial Insert, Patellar Component, and Mobile Tibial Components Cemented.
 Used with bone cement.

FIX-MOBILE POSTERIOR STABILIZED FEMORAL COMPONENTS (CEMENTED)



CAT. NO	SIDE	SIZE
AK702FCPS0R01	Right	1
AK702FCPS0R02	Right	2
AK702FCPS0R03	Right	3
AK702FCPS0R04	Right	4
AK702FCPS0R05	Right	5
AK702FCPS0L01	Left	1
AK702FCPS0L02	Left	2
AK702FCPS0L03	Left	3
AK702FCPS0L04	Left	4
AK702FCPS0L05	Left	5

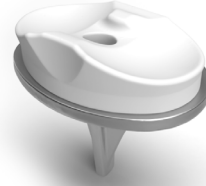
Material : Casted Co-Cr-Mo alloy (ISO 5832-4).
Intended Use : Primary knee replacement.
Use on/with : Fix Tibial Component Cemented, Insert Locking Screw, Fix-Mobile Cruciate Retaining Tibial Insert, and Patellar Component **OR** Mobile Tibial Components Cemented, Fix-Mobile Posterior Stabilized Tibial Inserts and Patellar Component.
 Used with bone cement.

FIX TIBIAL COMPONENTS (CEMENTED)


Material : Casted Co-Cr-Mo alloy (ISO 5832-4).

Intended Use : Primary knee replacement.

Use on/with : Fix-Mobile Cruciate Retaining Femoral Component Cemented, Insert Locking Screw, Fix-Mobile Cruciate Retaining Tibial Insert, and Patellar Component **OR** Fix-Mobile Posterior Stabilized Femoral Component Cemented, Insert Locking Screw, Fix-Mobile Cruciate Retaining Tibial Insert, and Patellar Component. Used with bone cement.



CAT. NO	SIDE	SIZE
AK703TCFC0R01	Right	1
AK703TCFC0R02	Right	2
AK703TCFC0R03	Right	3
AK703TCFC0R04	Right	4
AK703TCFC0R05	Right	5
AK703TCFC0L01	Left	1
AK703TCFC0L02	Left	2
AK703TCFC0L03	Left	3
AK703TCFC0L04	Left	4
AK703TCFC0L05	Left	5

INSERT LOCKING SCREWS


CAT. NO	SIZE (mm)
AK705ILSCR010	10
AK705ILSCR012	12
AK705ILSCR014	14
AK705ILSCR016	16

Material : Ti bar (ISO 5832-3 Ti-6Al-4V Gr5 Eli)

Intended Use: Primary knee replacement.

Use on/with : Fix-Mobile Cruciate Retaining Femoral Component Cemented, Fix Tibial Component Cemented, Fix-Mobile Cruciate Retaining Tibial Insert, and Patellar Component **OR** Fix Posterior Stabilized Femoral Component Cemented, Mobile Tibial Component Cemented, Fix-Mobile Cruciate Retaining Tibial Insert, and Patellar Component. Used with bone cement.

MOBILE TIBIAL COMPONENTS (CEMENTED)


CAT. NO	SIDE	SIZE
AK704TCMC0R01	Right	1
AK704TCMC0R02	Right	2
AK704TCMC0R03	Right	3
AK704TCMC0R04	Right	4
AK704TCMC0R05	Right	5
AK704TCMC0L01	Left	1
AK704TCMC0L02	Left	2
AK704TCMC0L03	Left	3
AK704TCMC0L04	Left	4
AK704TCMC0L05	Left	5

Material : Casted Co-Cr-Mo alloy (ISO 5832-4).

Intended Use: Primary knee replacement.

Use on/with : Fix-Mobile Cruciate Retaining Femoral Component Cemented, Fix-Mobile Posterior Stabilized Tibial Insert, and Patellar Component **OR** Fix-Mobile Posterior Stabilized Femoral Component Cemented, Fix-Mobile Posterior Stabilized Tibial Insert, and Patellar Component. Used with bone cement.

FIX-MOBILE CRUCIATE RETAINING TIBIAL INSERTS



Material : UHMWPE (ISO 5834-2).

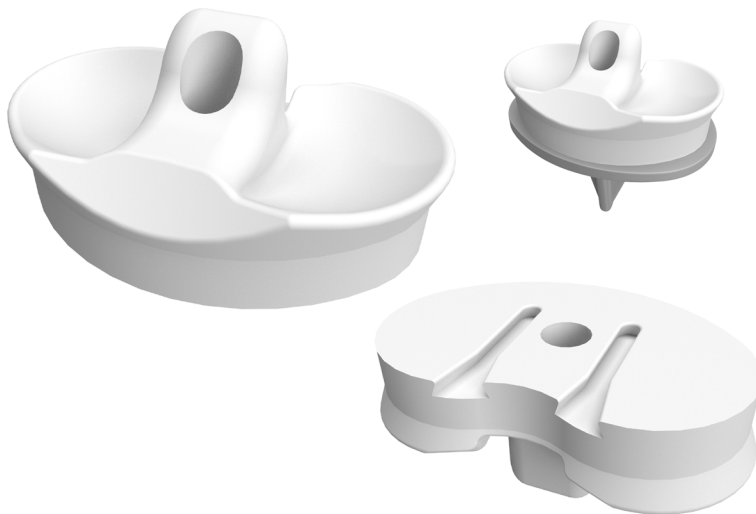
Intended Use : Primary knee replacement.

Use on/with : Fix-Mobile Cruciate Retaining Femoral Component Cemented, Fix Tibial Component Cemented, Insert Locking Screw, and Patellar Component **OR** Fix-Mobile Posterior Stabilized Femoral Component Cemented, Mobile Tibial Component Cemented, Insert Locking Screw, and Patellar Component.

CAT. NO	SIZE (mm)
AK706TICR0110	1x10
AK706TICR0112	1x12
AK706TICR0114	1x14
AK706TICR0116	1x16
AK706TICR0210	2x10
AK706TICR0212	2x12
AK706TICR0214	2x14
AK706TICR0216	2x16
AK706TICR0310	3x10
AK706TICR0312	3x12
AK706TICR0314	3x14
AK706TICR0316	3x16

CAT. NO	SIZE (mm)
AK706TICR0410	4x10
AK706TICR0412	4x12
AK706TICR0414	4x14
AK706TICR0416	4x16
AK706TICR0510	5x10
AK706TICR0512	5x12
AK706TICR0514	5x14
AK706TICR0516	5x16

FIX-MOBILE POSTERIOR STABILIZED TIBIAL INSERTS



Material : UHMWPE (ISO 5834-2).

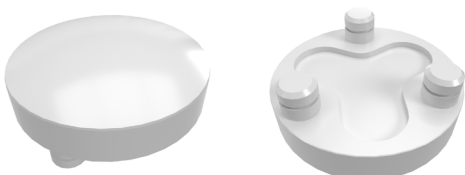
Intended Use : Primary knee replacement.

Use on/with : Fix-Mobile Cruciate Retaining Femoral Component Cemented, Mobile Tibial Component Cemented, and Patellar Component **OR** Fix-Mobile Posterior Stabilized Femoral Component Cemented, Mobile Tibial Component Cemented, and Patellar Component.

CAT. NO	SIZE (mm)
AK707TIPS0110	1x10
AK707TIPS0112	1x12
AK707TIPS0114	1x14
AK707TIPS0116	1x16
AK707TIPS0210	2x10
AK707TIPS0212	2x12
AK707TIPS0214	2x14
AK707TIPS0216	2x16
AK707TIPS0310	3x10
AK707TIPS0312	3x12
AK707TIPS0314	3x14
AK707TIPS0316	3x16

CAT. NO	SIZE (mm)
AK707TIPS0410	4x10
AK707TIPS0412	4x12
AK707TIPS0414	4x14
AK707TIPS0416	4x16
AK707TIPS0510	5x10
AK707TIPS0512	5x12
AK707TIPS0514	5x14
AK707TIPS0516	5x16

PATELLAR COMPONENTS (CEMENTED)



Material : UHMWPE (ISO 5834-2).

Intended Use : Primary knee replacement.

Use on/with : Fix-Mobile Cruciate Retaining Femoral Component Cemented, Fix Tibial Component Cemented, Insert Locking Screw, Fix-Mobile Cruciate Retaining Tibial Insert **OR** Fix-Mobile Posterior Stabilized Femoral Component Cemented, Mobile Tibial Component Cemented, Fix-Mobile Posterior Stabilized Tibial Insert.

CAT. NO	DIA. (mm)
AK708PATCO026	26
AK708PATCO028	28

TOTAL KALÇA PROTEZİ

TOTAL HIP ARTHROPLASTY

MODULAR FEMORAL BODY I (SANDBLASTED, UNCEMENTED)



Material : Forged Ti (ISO 5832-3 Ti-6Al-4V Gr5 Eli) and SANDBLASTED.

Intended Use : Primary hip replacement.

Use on/with : Acetabular Cup, Acetabular Screw, Acetabular Cup Insert, Bipolar Femoral Heads, Femoral Head 12/14 Taper, Modular Femoral Stem and Femoral Body-Stem Locking Bolt. Sandblasted uncemented Modular Femoral Body.

CAT. NO	SIZE
AH908FPB0SB01	XS
AH908FPB0SB02	S
AH908FPB0SB03	M
AH908FPB0SB04	L

MODULAR FEMORAL BODY II (HA COATED, UNCEMENTED)



Material : Forged Ti (ISO 5832-3 Ti-6Al-4V Gr5 Eli) and HA coating.

Intended Use : Primary hip replacement.

Use on/with : Acetabular Cup, Acetabular Screw, Acetabular Cup Insert, Bipolar Femoral Heads, Femoral Head 12/14 Taper, Modular Femoral Stem and Femoral Body-Stem Locking Bolt. HA Coated uncemented Modular Femoral Body.

CAT. NO	SIZE
AH909FPB0HA01	XS
AH909FPB0HA02	S
AH909FPB0HA03	M
AH909FPB0HA04	L

MODULAR FEMORAL CALCAR BODY I (SANDBLASTED, UNCEMENTED)



Material : Forged Ti (ISO 5832-3 Ti-6Al-4V Gr5 Eli). and SANDBLASTED

Intended Use : Primary hip replacement.

Use on/with : Acetabular Cup, Acetabular Screw, Acetabular Cup Insert, Bipolar Femoral Heads ,Femoral Head 12/14 Taper, Modular Femoral Stem and Femoral Body-Stem Locking Bolt. Sandblasted uncemented Modular Femoral Calcar Body.

CAT. NO	SIZE
AH908CPB0SB02	S
AH908CPB0SB03	M
AH908CPB0SB04	L

MODULAR FEMORAL CALCAR BODY II (HA COATED, UNCEMENTED)



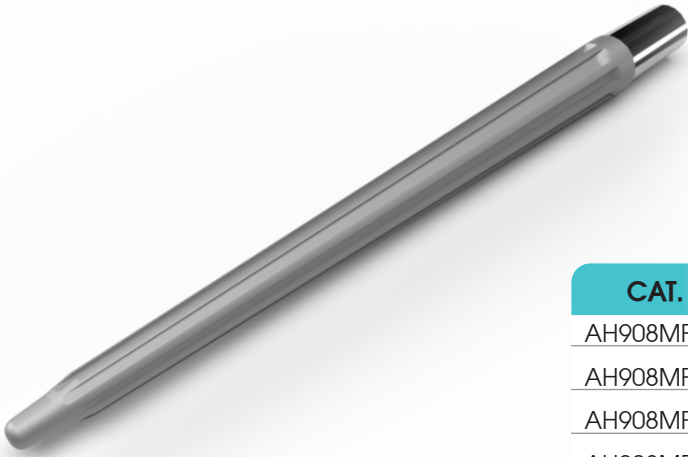
Material : Forged Ti (ISO 5832-3 Ti-6Al-4V Gr5 Eli) and HA coating.

Intended Use : Primary hip replacement.

Use on/with : Acetabular Cup, Acetabular Screw, Acetabular Cup Insert, Bipolar Femoral Heads , Femoral Head 12/14 Taper, Modular Femoral Stem and Femoral Body-Stem Locking Bolt. HA Coated uncemented Modular Femoral Calcar Body.

CAT. NO	SIZE
AH909CPB0HA02	S
AH909CPB0HA03	M
AH909CPB0HA04	L

MODULAR FEMORAL STEM I (SANDBLASTED, UNCEMENTED)



Material : Ti bar (ISO 5832-3 Ti-6Al-4VGr5 Eli) and sandblasted.
Intended Use : Primary hip replacement.
Use on/with : Acetabular Cup, Acetabular Screw, Acetabular Cup Insert, Bipolar Femoral Heads, Femoral Head 12/14 Taper, Modular Femoral Body, Modular Femoral Calcar Body, Modular Femoral Stem and Femoral Body-Stem Locking Bolt. Sandblasted un cemented Modular Femoral Stem.

CAT. NO	SIZE (mm)	CAT. NO	SIZE (mm)	CAT. NO	SIZE (mm)
AH908MFS01412	14x120	AH908MFS01522	15x220	AH908MFS01718	17x180
AH908MFS01414	14x140	AH908MFS01524	15x240	AH908MFS01720	17x200
AH908MFS01416	14x160	AH908MFS01612	16x120	AH908MFS01722	17x220
AH908MFS01418	14x180	AH908MFS01614	16x140	AH908MFS01724	17x240
AH908MFS01420	14x200	AH908MFS01616	16x160	AH908MFS01812	18x120
AH908MFS01422	14x220	AH908MFS01618	16x180	AH908MFS01814	18x140
AH908MFS01424	14x240	AH908MFS01620	16x200	AH908MFS01816	18x160
AH908MFS01512	15x120	AH908MFS01622	16x220	AH908MFS01818	18x180
AH908MFS01514	15x140	AH908MFS01624	16x240	AH908MFS01820	18x200
AH908MFS01516	15x160	AH908MFS01712	17x120	AH908MFS01822	18x220
AH908MFS01518	15x180	AH908MFS01714	17x140	AH908MFS01824	18x240
AH908MFS01520	15x200	AH908MFS01716	17x160		

MODULAR FEMORAL STEM II (HA COATED, UNCEMENTED)



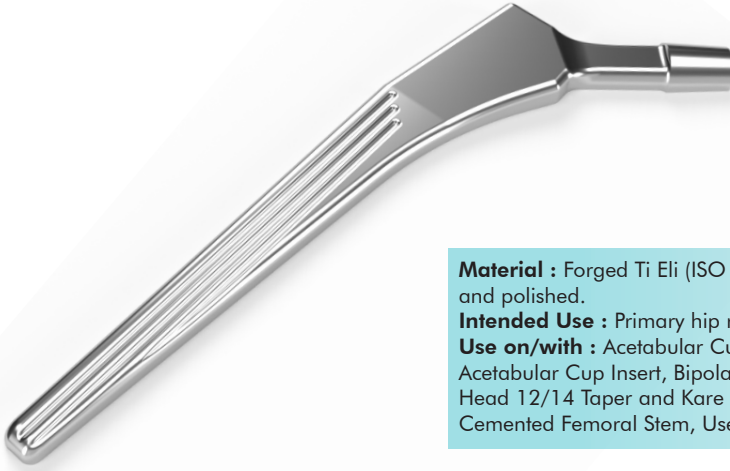
Material : Ti bar (ISO 5832-3 Ti-6Al-4V Gr5 Eli) and HA coating.
Intended Use : Primary hip replacement.
Use on/with : Acetabular Cup, Acetabular Screw, Acetabular Cup Insert, Bipolar Femoral Heads, Femoral Head 12/14 Taper, Modular Femoral Body, Modular Femoral Calcar Body, Modular Femoral Stem and Femoral Body-Stem Locking Bolt. HA Coated un cemented Modular Femoral Stem.

CAT. NO	SIZE (mm)	CAT. NO	SIZE (mm)	CAT. NO	SIZE (mm)
AH909MFSH1412	14x120	AH909MFSH1522	15x220	AH909MFSH1718	17x180
AH909MFSH1414	14x140	AH909MFSH1524	15x240	AH909MFSH1720	17x200
AH909MFSH1416	14x160	AH909MFSH1612	16x120	AH909MFSH1722	17x220
AH909MFSH1418	14x180	AH909MFSH1614	16x140	AH909MFSH1724	17x240
AH909MFSH1420	14x200	AH909MFSH1616	16x160	AH909MFSH1812	18x120
AH909MFSH1422	14x220	AH909MFSH1618	16x180	AH909MFSH1814	18x140
AH909MFSH1424	14x240	AH909MFSH1620	16x200	AH909MFSH1816	18x160
AH909MFSH1512	15x120	AH909MFSH1622	16x220	AH909MFSH1818	18x180
AH909MFSH1514	15x140	AH909MFSH1624	16x240	AH909MFSH1820	18x200
AH909MFSH1516	15x160	AH909MFSH1712	17x120	AH909MFSH1822	18x220
AH909MFSH1518	15x180	AH909MFSH1714	17x140	AH909MFSH1824	18x240
AH909MFSH1520	15x200	AH909MFSH1716	17x160		

FEMORAL BODY-STEM FASTENER BOLT

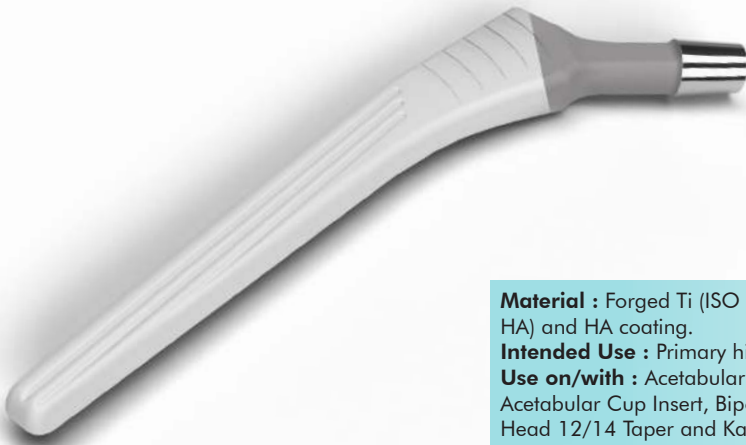

Material : Ti bar (ISO 5832-3 Ti-6Al-4V Gr5 Eli)
Intended Use : Primary hip replacement.
Use on/with : Acetabular Cup, Acetabular Screw, Acetabular Cup Insert, Bipolar Femoral Heads, Femoral Head 12/14 Taper, Modular Femoral Body, Modular Femoral Calcar Body, Modular Femoral Stem.

CAT. NO	SIZE
AH908MFSBO0XS	XS
AH908MFSBO00S	S
AH908MFSBO00M	M
AH908MFSBO00L	L

KARE FEMORAL STEM I (POLISHED, CEMENTED)


Material : Forged Ti Eli (ISO 5832-3 Ti-6Al-4V Gr5 Eli) and polished.
Intended Use : Primary hip replacement.
Use on/with : Acetabular Cup, Acetabular Screw, Acetabular Cup Insert, Bipolar Femoral Heads, Femoral Head 12/14 Taper and Kare Femoral Stem. Cemented Femoral Stem, Used With Bone Cement.

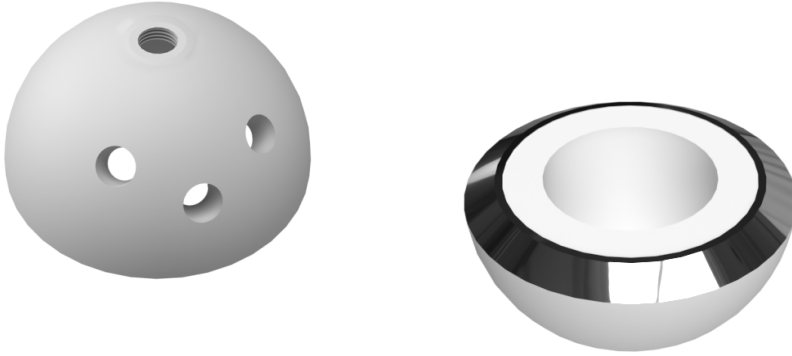
CAT. NO	SIZE
AH908KFS01109	9
AH908KFS01110	10
AH908KFS01111	11
AH908KFS01112	12
AH908KFS01113	13
AH908KFS01114	14
AH908KFS01115	15
AH908KFS01116	16

KARE FEMORAL STEM III (HA COATED, UNCEMENTED)


Material : Forged Ti (ISO 5832-3 Ti-6Al-4V Gr5 Eli 1/3 HA) and HA coating.
Intended Use : Primary hip replacement.
Use on/with : Acetabular Cup, Acetabular Screw, Acetabular Cup Insert, Bipolar Femoral Heads, Femoral Head 12/14 Taper and Kare Femoral Stem. HA Coated uncemented Femoral Stem.

CAT. NO	SIZE
AH908KFS03309	9
AH908KFS03310	10
AH908KFS03311	11
AH908KFS03312	12
AH908KFS03313	13
AH908KFS03314	14
AH908KFS03315	15
AH908KFS03316	16

ACETABULAR CUPS (HA COATED, UNCEMENTED)



CAT. NO	SIZE (mm)	Femoral head (mm)
AH901ACCUP044	44	28
AH901ACCUP046	46	28
AH901ACCUP048	48	32
AH901ACCUP050	50	32
AH901ACCUP052	52	32
AH901ACCUP054	54	32
AH901ACCUP056	56	32
AH901ACCUP058	58	32
AH901ACCUP060	60	32
AH901ACCUP062	62	32

Material : Forged Ti (ISO 5832-3 Ti-6Al-4V Gr5 Eli) with outer surface sandblasted and UHMWPE (ISO 5834-2).

Intended Use : Primary hip replacement.

Use on/with : Acetabular Screw, Acetabular Cup Insert, Femoral Head 12/14 Taper and Kare Femoral Stem or Modular Femoral Body, Modular Femoral Calcar Body, Modular Femoral Stem and Femoral Body-Stem Locking Bolt.

ACETABULAR CUP INSERTS



CAT. NO	DIA. (mm)	Femoral head (mm)
AH902ACI00044	44/46	28
AH902ACI00048	48/50	32
AH902ACI00052	52/54	32
AH902ACI00056	56/58	32
AH902ACI00060	60/62	32

Material : UHMWPE (ISO 5834-2).

Intended Use : Primary hip replacement.

Use on/with : Acetabular Cup, Acetabular Screw, Acetabular Cup Insert, Femoral Head 12/14 Taper and Kare Femoral Stem, Modular Femoral Body, Modular Femoral Calcar Body, Modular Femoral Stem and Femoral Body-Stem Locking Bolt.

ACETABULAR CUP INSERTS 15 DEGREES

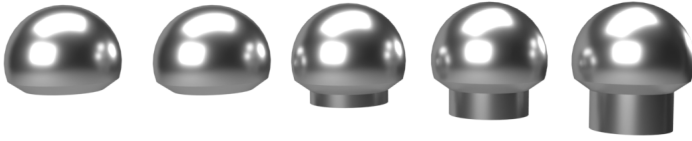


CAT. NO	DIA. (mm)	Femoral head (mm)
AH902ACI15044	44/46	28
AH902ACI15048	48/50	32
AH902ACI15052	52/54	32
AH902ACI15056	56/58	32
AH902ACI15060	60/62	32

Material : UHMW-PE (ISO 5834-2).

Intended Use : Primary hip replacement.

Use on/with : Acetabular Cup, Acetabular Screw, Acetabular Cup Insert, Femoral Head 12/14 Taper and Kare Femoral Stem, Modular Femoral Body, Modular Femoral Calcar Body, Modular Femoral Stem and Femoral Body-Stem Locking Bolt.

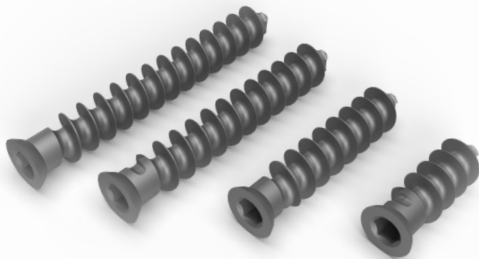
FEMORAL HEADS


Material : Casted CoCrMo (ISO 5832-4).

Intended Use : Primary hip replacement.

Use on/with : Acetabular Cup, Acetabular Screw, Acetabular Cup Insert, Bipolar Femoral Heads and Kare Femoral Stem, Modular Femoral Body, Modular Femoral Calcar Body, Modular Femoral Stem and Femoral Body-Stem Locking Bolt.

CAT. NO	SIZE (mm)	DIA. (mm)
AH907FH0SM022	S	22
AH907FH0ME022	M	22
AH907FH0LA022	L	22
AH907FH0SM028	S	28
AH907FH0ME028	M	28
AH907FH0LA028	L	28
AH907FH0XL028	XL	28
AH907FH0XXL28	XXL	28
AH907FH0SM032	S	32
AH907FH0ME032	M	32
AH907FH0LA032	L	32
AH907FH0XL032	XL	32
AH907FH0XXL32	XXL	32

ACETABULAR SCREWS


Material : Ti bar (ISO 5832-3 Ti-6Al-4V Gr5 Eli).

Intended Use : Primary hip replacement.

Use on/with : Acetabular Cup, Acetabular Insert

CAT. NO	SIZE (mm)
AH903ACSCR020	20
AH903ACSCR025	25
AH903ACSCR030	30
AH903ACSCR035	35
AH903ACSCR040	40
AH903ACSCR045	45
AH903ACSCR050	50
AH903ACSCR055	55
AH903ACSCR060	60

BIPOLEAR FEMORAL HEADS


Material : Casted CoCrMo (ISO 5832-4) and UHMWPE liner (ISO 5834-2).

Intended Use : Primary hip replacement.

Use on/with : Femoral Head 12/14 Taper, Kare Femoral Stem Modular Femoral Body, Modular Femoral Calcar Body, Modular Femoral Stem and Femoral Body-Stem Locking Bolt.

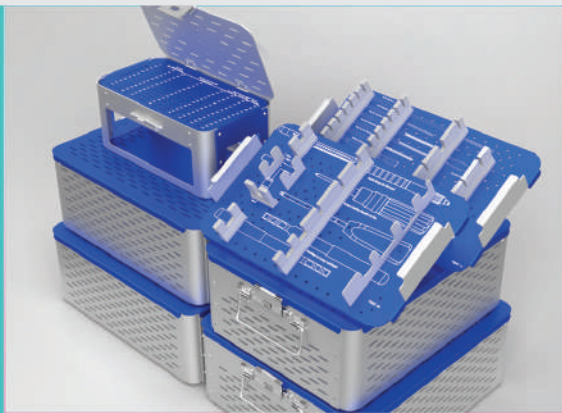
CAT. NO	SIZE (mm)	Femoral head (mm)
AH906BPFH0040	40	22
AH906BPFH0042	42	22
AH906BPFH0044	44	28
AH906BPFH0046	46	28
AH906BPFH0048	48	28
AH906BPFH0050	50	28
AH906BPFH0052	52	28
AH906BPFH0054	54	28
AH906BPFH0056	56	28
AH906BPFH0058	58	28



**ORTHOPAEDIC
TRAUMA PRODUCTS**



**ORTHOPAEDIC SURGICAL
INSTRUMENTS**



**ORTHOPAEDIC
INSTRUMENT CONTAINERS**



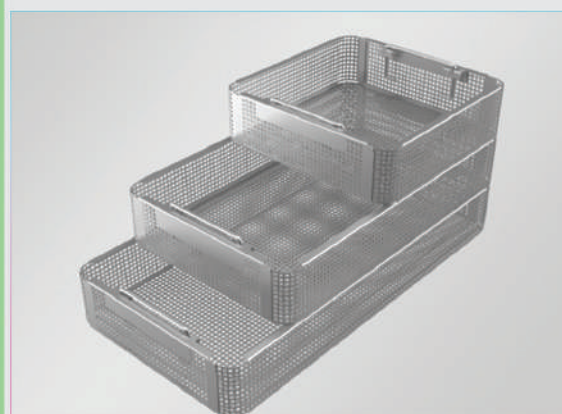
**ORTHOPAEDIC SURGERY
INSTRUMENT SETS**



**STERILIZATION CONTAINERS
AND ACCESSORIES**



**TOTAL KNEE & HIP
ARTHROPLASTY**



**PERFORATED
SHEET BASKETS**



**MAXILLOFACIAL
AND MANDIBLE**

www.aysam.com.tr

İSTANBUL

Molla Gürani Mah. Molla Gürani Cad. No:59/9 Fındıkzade / Fatih / İstanbul TÜRKİYE
+90 212 531 12 00
istanbul@aysam.com.tr

SAMSUN

Ulugazi Mah. İstiklal Cad. No: 28/5 İlkadım / Samsun TÜRKİYE
Tel: +90 362 435 37 72 - Fax: +90 362 420 02 94
export@aysam.com.tr

WORKSHOP

Organize Sanayi Sitesi M.Erdoğan Cebeci Bulv. No: 34 Kutlukent / Samsun TÜRKİYE
Tel: +90 362 266 69 70
fabrika@aysam.com.tr

WAREHOUSE

Kirazlık Mah 1034 Cd. No:14 Tekkeköy / Samsun TÜRKİYE
Tel: +90 362 435 37 72
depo@aysam.com.tr



quality & trust

